

JANUARY 2025

Newsletter

4-H YOUTH DEVELOPMENT



NEW YEAR, NEW ADVENTURES IN 4-H!

RECIPE OF THE MONTH

HELLO, 2025!

A NEW YEAR MEANS NEW ADVENTURES, AND WE'RE READY TO MAKE IT THE BEST ONE YET! JANUARY IS PACKED WITH OPPORTUNITIES TO LEARN, CREATE, AND CONNECT, SO LET'S DIVE IN TOGETHER.

- ★ 2025 COMMUNICATION CONTEST DETAILS ARE HERE—GET READY TO SHARE YOUR VOICE!
- 📷 THE WINTER PHOTO CONTEST IS OFFICIALLY OPEN! SUBMIT YOUR BEST WINTER SCENES BY MARCH 1ST.
- 🗑️ CONGRATULATIONS TO EVERYONE WHO PARTICIPATED IN THE TRASH SCULPTURE CONTEST—CHECK OUT THE RESULTS INSIDE!
- 🧵 NEW CLUB ALERT: SEWING CLUB IS HERE!
- 🌲 FRESH UPDATES FOR THE OUTDOOR ADVENTURE CLUB, SHOOTING SPORTS, AND LIVINGSTON HELPERS ARE INCLUDED.
- 🌟 PLUS, CONTINUED FUN WITH CLOVERBUDS, CHEF CLUB, CRAFT CLUB, AND GAMERS CLUB.

DON'T FORGET TO CHECK OUT THE JANUARY 4-H CALENDAR—WE'VE GOT SOMETHING FOR EVERYONE THIS MONTH! HERE'S TO MAKING THIS YEAR UNFORGETTABLE.

BREAD IN A BAG



INGREDIENTS:

- 2-1/2 TO 3 CUPS ALL-PURPOSE FLOUR
- 1 ENVELOPE RAPID YEAST
- 3 TABLESPOONS SUGAR
- 3 TABLESPOONS NONFAT DRY MILK
- 1 TEASPOON SALT
- 1 CUP WATER
- 3 TABLESPOONS VEGETABLE OIL

DIRECTIONS:

1. COMBINE 1 CUP FLOUR, UNDISSOLVED YEAST, SUGAR, DRY MILK, AND SALT IN A 1-GALLON, RESEALABLE HEAVY DUTY FREEZER BAG. SQUEEZE UPPER PART OF BAG TO FORCE OUT AIR. SHAKE AND WORK BAG WITH FINGERS TO BLEND INGREDIENTS. HEAT WATER AND OIL UNTIL VERY WARM (120° TO 130°F): ADD TO FLOUR MIXTURE.
2. RESEAL BAG: MIX THOROUGHLY BY WORKING BAG WITH FINGERS. GRADUALLY ADD ENOUGH REMAINING FLOUR TO MAKE A STIFF BATTER THAT PULLS AWAY FROM THE BAG. REMOVE DOUGH FROM BAG: KNEAD ON LIGHTLY FLOURED SURFACE UNTIL SMOOTH AND ELASTIC, ABOUT 8 TO 10 MINUTES. COVER: LET REST 10 MINUTES.
3. ROLL DOUGH TO 12 X 7-INCH RECTANGLE. BEGINNING FROM SHORT END, ROLL UP TIGHTLY. PINCH SEAM AND ENDS TO SEAL. PLACE IN GREASED 8-1/2 X 4-1/2-INCH LOAF PAN. COVER: LET RISE IN WARM, DRAFT FREE PLACE UNTIL DOUBLED IN SIZE, ABOUT 45 MINUTES TO 1 HOUR.
4. BAKE AT 375°F FOR 30 TO 35 MINUTES OR UNTIL DONE. COOL 5 MINUTES IN PAN. REMOVE FROM PAN: COOL COMPLETELY ON WIRE RACK.

"THE BEST TIME FOR NEW BEGINNINGS IS NOW." - Anonymous

Sharee Schoonover



Livingston County
4-H Youth Development
803 US 60 EAST
SMITHLAND, KY 42081

O: 270.928.2168
C: 270.779.1884
SHAREE.SCHOONOVER@UKY.EDU

OTHER WAYS TO GET INVOLVED

Follow us:



@LIVCO4H.KY
@LIVINGSTON4HCLUB
@LIVINGSTON COUNTY COOPERATIVE EXTENSION



Cooperative Extension Service
Agriculture and Natural Resources
Family and Consumer Sciences
4-H Youth Development
Community and Economic Development

Educational programs of Kentucky Cooperative Extension serve all people regardless of economic or social status and will not discriminate on the basis of race, color, ethnic origin, national origin, creed, religion, political belief, sex, sexual orientation, gender identity, gender expression, pregnancy, marital status, genetic information, age, veteran status, or physical or mental disability. University of Kentucky, Kentucky State University, U.S. Department of Agriculture, and Kentucky Counties, Cooperating.
LEXINGTON, KY 40546



Disabilities accommodated with prior notice

Livingston County 4-H 

Communications Contest

Age as of Jan. 1, 2025

Cloverbud (Age 5-8) *County Only*
 Junior (Age 9-13)
 Senior (Age 14-18)

Topics:

- Agriculture
- Visual or Performing arts,
- Clothing/textiles
- Family & consumer science
- Foods
- Health
- Natural resources
- Shooting sports
- S.E.T.
- Digital media (will need posters to go along with demonstration.)

Rules:

- Speeches:
- Cloverbuds: 3 minutes, any topic
 - Juniors: 3-5 minutes, any topic
 - Seniors: 5-7 minutes, any topic

Demonstrations:

- 5-15 minutes, any topic
- MUST have a poster board, or tri-fold poster as a visual aid.
- Review Specific Demonstration Rules
- No weapons (or ammo) allowed.

LCMS, LCHS, & Homeschool students will compete at the county contest 3/17/25. Pre-registration is required.

2025

CONTEST INFORMATION

School Contest information:



SLES *During School*

- 5th Grade: 1/22/25
- 4th Grade: 1/29/25

NLES

- 5th Grade: TBD, February
- 4th Grade: TBD, February

Winners from each topic will move on to compete at the County Communications day: Monday, March 17th at the Livingston County Extension Office

For more information, reach out! Call: 270.928.2168 Email: sharee.schoonover@uky.edu



Jan. 1st - Mar. 1st

Contest Divisions are based on year as of January 1, 2025

Cloverbuds: 5-8 years old
 Juniors: 9-13 years old
 Seniors: 14-18 years old

Livingston County 4-H WINTER Photo Contest

Categories:

- Forest: Photo of a large area dominated by trees
- Water: Photo of still or moving water
- Plant Life: Photo of plants
- Natural Science: Photo showing a natural scene
- Wildlife: Photo showing unrestrained wildlife in natural habitat

Email Entries to:
sharee.schoonover@uky.edu

Please include students first/last name and age when sending entries!



NLES Lower Elementary

1st: Mckenzie Dukes-
Mckenzie's Flowers

Upper Elementary

1st: Margot Hosick-
Evergreen Forest

2nd: Raelynn Harris-
Poky the Porcupine

3rd: Taylyn Pierson-
Lightnin' Bug

3rd in County Contest

Fan Favorite: Amelia Turner-
Minion Cake

SLES Lower Elementary

1st: Emory Garner-
Butterfly Bank

1st in County Contest

2nd: Foster Croft-
Shelly the Turtle

2nd in County Contest

3rd: Levi Whetstone-
Bird House

3rd in County Contest

Upper Elementary

1st: Lily Kate Garner-
Birdfeeder

2nd: Selah Ramage-
Cellphone Speaker

1st in County Contest, 2nd in Area Contest

3rd: Ayden Henson-
The Foot Stool

2nd in County Contest

Fan Favorite: Mackenzie Scott-
Henry the Dog

LIVINGSTON COUNTY 4-H TRASH SCULPTURE CONTEST 2024

LCMS

1st: Emery Rhea- Piggy Bank
1st in County Contest

LCHS

1st: Holi Kerr- Recycled Rug
1st in County Contest

SEWING CLUB

5:30-6:30 PM

Livingston County Extension Office

803 US 60 East
Smithland, KY

FREE!

AGES 9-18

REGISTRATION REQUIRED BY: 1/24/25

To register or for more information, reach out!

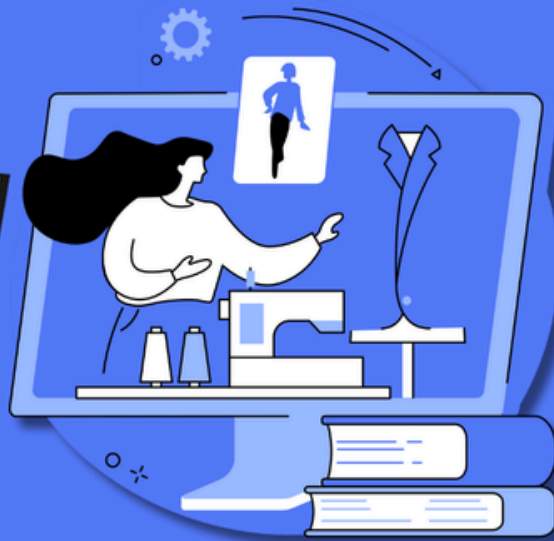
Call: 270.928.2168

Email: sharee.schoonover@uky.edu



Meeting Dates:

2/3/25 5/5/25
3/3/25 6/9/25
4/14/25



**INSTRUCTOR:
HALLIE REPOVICH**

5.20.25
6.24.25
7.15.25
7.29.25
9.12.25:

LBL FORESTRY FIELD DAY

Limited Space,
Registration **REQUIRED!**

**REGISTER BY:
MAY 16, 2025**

**8:30 AM-
12:00 PM**

We will meet at the Livingston County Extension Office and be transported to an outdoor site for exploration. A PB&J sack lunch will be provided.

OUTDOOR ADVENTURE CLUB

FREE!

This program is designed for youth ages 9-18. Cloverbuds (ages 5-8) are welcome but **MUST** be transported and accompanied by an adult.

More Info:
270.928.2168

sharee.schoonover@uky.edu

Livingston County 4-H SHOOTING SPORTS



DISCIPLINES OFFERED:

Archery with Coach Dawn
Rifle with Coach Bryce

MORE INFORMATION COMING SOON!

Join the Shooting Sports GroupMe to stay up-to-date



LIVINGSTON HELPERS



More Info:
270.928.2168
sharee.schoonover@uky.edu

FREE!

2.4.25 @5:00 PM: BIRTHDAY CAKE KITS
LOCATION: LIVINGSTON COUNTY EXTENSION OFFICE

4.4.25 @5:00 PM: VETERANS FLAG DISPLAY
LOCATION: GRAND RIVERS COMMUNITY CENTER

JULY DATE/TIME TBD: SUMMER FEEDING PROGRAM
LOCATION: NORTH LIVINGSTON ELEMENTARY SCHOOL





FREE!

GAMERS CLUB



10.24.24 @5:00 pm 2.13.25 @5:00 pm
 11.21.24 @5:00 pm 3.13.25 @5:00 pm
 1.16.25 @5:00 pm 4.24.25 @5:00 pm

ALL meetings will take place at the Livingston County Extension Office, 803 US 60E. Smithland, KY 42081

More Info:
 270.928.2168
sharee.schoonover@uky.edu



FREE



4-H CRAFT CLUB

ALL MEETINGS WILL TAKE PLACE AT THE LIVINGSTON COUNTY EXTENSION OFFICE, 803 US 60E. SMITHLAND, KY 42081

10.3.24 @5:00 PM 2.6.25 @5:00 PM
 11.7.24 @5:00 PM 3.6.25 @5:00 PM
 1.9.25 @5:00 PM 4.3.25 @5:00 PM

More Info:
 270.928.2168
sharee.schoonover@uky.edu

4-H CLOVERBUDS

Youth Ages: 5-8
 An adult is required to attend each meeting



FREE!



Cloverbuds will explore the seven core areas of 4-H (Ag, Arts, FCS, Health, Leadership, Natural Resources, and Science, Engineering & Technology), learn about their community, and gain valuable life skills.

ALL meetings will be held at the Livingston County Extension Office
 803 US 60E. Smithland, KY 42081

More Info:
 270.928.2168
sharee.schoonover@uky.edu

10/15/24 @5:00 pm 2/25/25 @5:00 pm
 11/19/24 @5:00 pm 3/18/25 @5:00 pm
 1/21/25 @5:00 pm 4/22/25 @5:00 pm

CHEF CLUB



More Info:
 270.928.2168
sharee.schoonover@uky.edu



FREE

10.15.24 @5:00 pm
 11.19.24 @5:00 pm
 1.21.25 @5:00 pm
 2.25.25 @5:00 pm
 3.18.25 @5:00 pm
 4.22.25 @5:00 pm

ALL meetings will take place at the Livingston County Extension Office, 803 US 60E. Smithland, KY 42081



JANUARY 2025

SUNDAY

MONDAY

TUESDAY

WEDNESDAY

THURSDAY

FRIDAY

SATURDAY



4	3	2	1	8	7	6	5
				Winter Photo Contest: Begins	SLES Clubs	Area Teen Council	LEADERSHIP SKI TRIP
11	10	9	8	7	6	5	4
LEADERSHIP SKI TRIP	LEADERSHIP SKI TRIP	TLA Craft Club 5:00-6:00		SLES Clubs	SLES Clubs	Area Teen Council	LEADERSHIP SKI TRIP
18	17	16	15	14	13	12	11
		Gamers Club 5:00			Area Teen Council	Area Teen Council	LEADERSHIP SKI TRIP
25	24	23	22	21	20	19	18
	Sewing Club Registration DEADLINE		SLES 5th Grade Communication Contest	Chef Club & Cloverbuds 5:00-6:00	Office Closed MLK JR. Day		
31	31	30	29	28	27	26	25
			SLES 4th Grade Communication Contest	NLES Clubs	4-H Council 6:00		



Sharee Schoonover
 Livingston County
 4-H Youth Development
 803 US 60 EAST
 SMITHLAND, KY 42081
 O: 270.928.2168
 C: 270.779.1884
 SHAREE.SCHOONOVER@UKY.EDU

Cooperative Extension Service